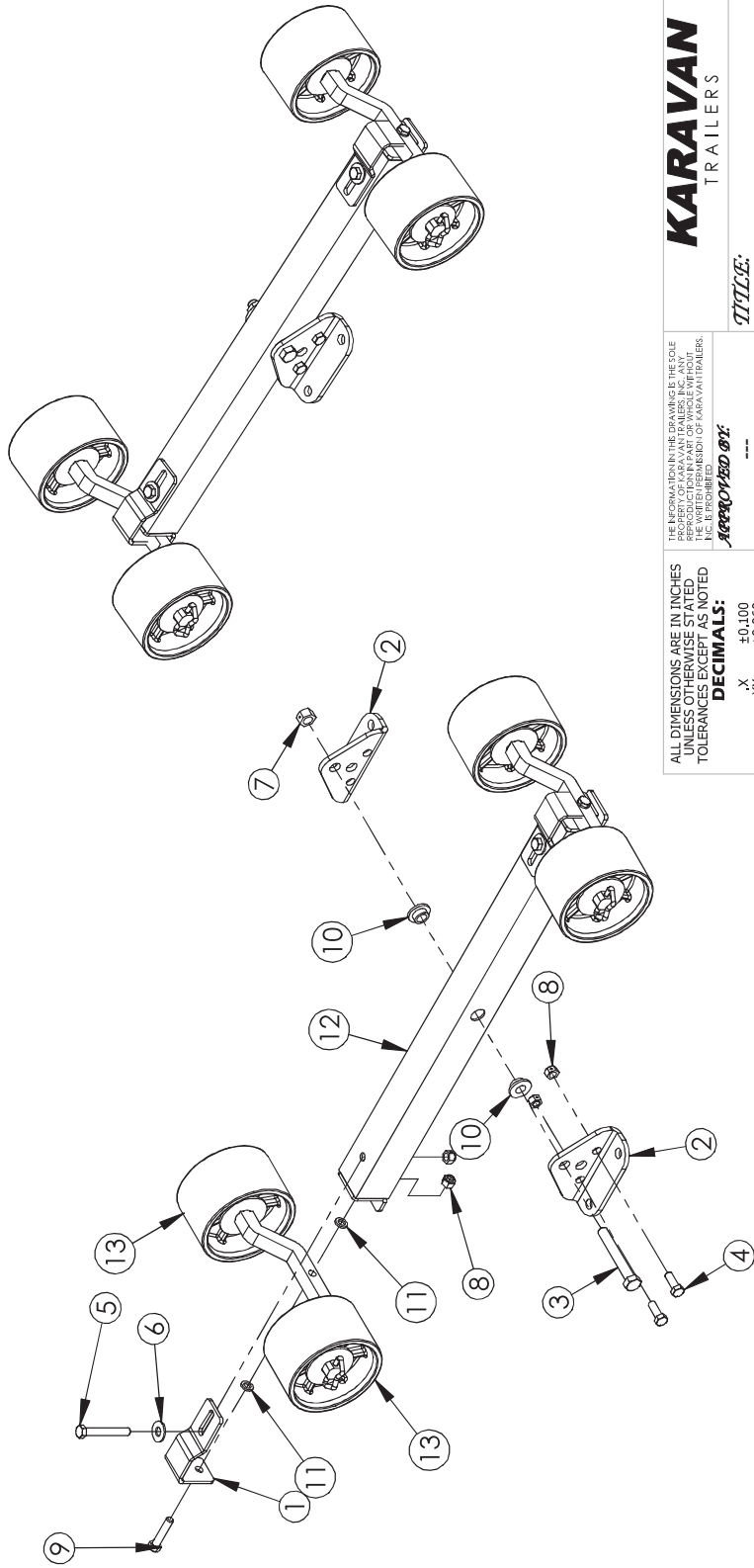


ITEM NO.	PART NUMBER	DESCRIPTION	QTY.
1	100-03912	ROLLER CAP BRACKET	2
2	100-04492	ROLLER BEAM BRACKET	2
3	210-00013	.50"-13 X 3.50" HX HD BOLT	1
4	210-00022	.375"-16 X 1.00" HX HD BOLT	2
5	210-00023	.375"-16 X 2.75" HX HD BOLT	2
6	210-00025	.375" FLAT WASHER	2
7	210-00061	.50"-13 CENTERLOCK HEX NUT	1
8	210-00076	.375"-16 CENTERLOCK HEX NUT	6
9	210-00178	.375"-16 X 1.75" HX HD BOLT	2
10	229-00229	NYLON WASHER	2
11	229-00358	WASHER	4
12	300-01655	ROLLER TUBE WELD	1
13	310-01505	ROLLER SUB-ASSEMBLY	2



KARAVAN
TRAILERS

TITLE: ROLLER ASSEMBLY

DATE: 06-28-11

SCALE: N/A

DESIGNED BY: Kay Hopf

ISSUED BY: SEE B.O.M.

REVISED BY: -BL, -GL

DWG. #: 310-02926-A

DECIMALS:
 X ±0.100
 .XX ±0.060
 .XXX ±0.030
 .XXXX ±0.010

ANGLES:
 ±1°

ALL FORMED ANGLES EQUAL 90° UNLESS NOTED OTHERWISE

() INDICATES REFERENCE

ALL DIMENSIONS ARE IN INCHES UNLESS OTHERWISE STATED TOLERANCES EXCEPT AS NOTED

APPROVED BY:

REPRODUCTION IN PART OR WHOLE WITHOUT PERMISSION OF KARAVAN TRAILERS, INC. IS PROHIBITED.

REV.	DESCRIPTION	DATE	CREATED
A	15300 ECR/NUMBER	06-28-11	KMH
	REVISED BY		
	DESCRIPTION		