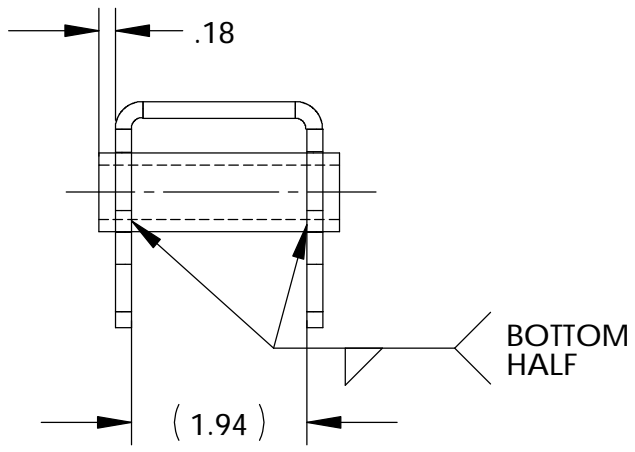
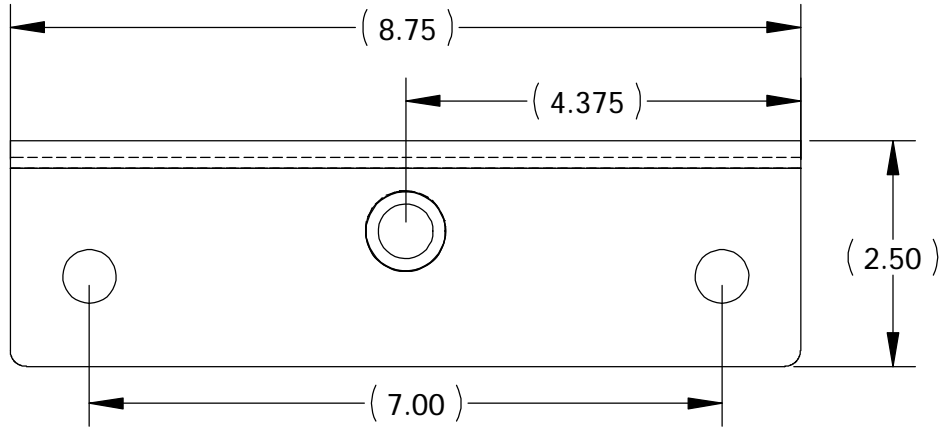
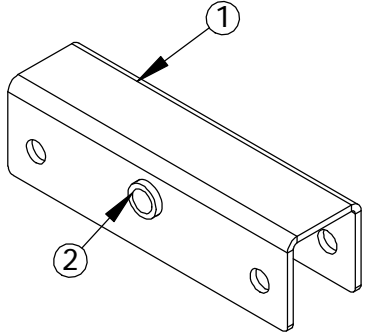
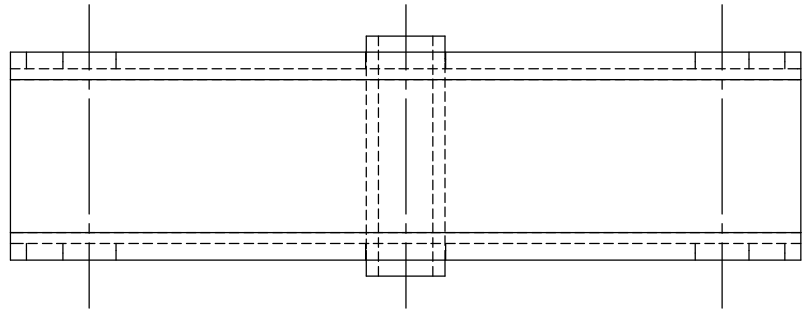


| ITEM NO. | PART NO. | DESCRIPTION | QTY. |
|----------|-----------|----------------------|------|
| 1 | 100-00305 | EQUALIZER CHANNEL | 1 |
| 2 | 100-00309 | EQUALIZER PIVOT TUBE | 1 |



ALL DIMENSIONS ARE IN INCHES
UNLESS OTHERWISE STATED
TOLERANCES EXCEPT AS NOTED
DECIMALS:
.X ±0.100
.XX ±0.060
.XXX ±0.030
.XXXX ±0.010
ANGLES:
±1°
ALL FORMED ANGLES
EQUAL 90° UNLESS
NOTED OTHERWISE
() INDICATES REFERENCE

THE INFORMATION IN THIS DRAWING IS THE SOLE
PROPERTY OF KARAVAN TRAILERS, INC. ANY
REPRODUCTION IN PART OR WHOLE WITHOUT
THE WRITTEN PERMISSION OF KARAVAN TRAILERS,
INC. IS PROHIBITED.
APPROVED BY:
DRAWN BY:
DATE: 05-07-97
SHEET: 1 OF 1
SCALE: N/A

KARAVAN
TRAILERS
TITLE: EQUALIZER WELDMENT
MAT'L: SEE B.O.M.
FINISH: ZINC PLATED
DWG. #: 300-00016

| DWG. REV. | ECR/NDR NUMBER | REVISED BY | DATE | DESCRIPTION |
|-----------|----------------|------------|----------|---------------------------|
| C | 12861 | JDS | 08-03-04 | .18 WAS (.102) BOTH SIDES |
| B | 10140 | SSD | 05-06-97 | DRAWN 3D |

First Piece - In Process Inspection Sheet

Vendor _____

Description: **Equalizer Weldment**

Part # **300-00016**

Rev. **C**

QA Approval: K. Baumhardt

JOB# _____

| Characteristic | Tol. | Method | Freq. | 1st Piece | A/R | 2 | A/R | 3 | A/R | 4 | A/R | 5 | A/R | 6 | A/R | 7 | A/R | Inspected By/Date: | |
|--|-------|---------|--------------|-----------|-----|---|-----|---|-----|---|-----|---|-----|---|-----|---|-----|--------------------|-----|
| .18 | ±.060 | Caliper | 2X per shift | | | | | | | | | | | | | | | | 1 / |
| Weld per print | Y/N | Visual | 2X per shift | | | | | | | | | | | | | | | | 2 / |
| Remove all visible weld spatter | NA | Visual | Every piece | | | | | | | | | | | | | | | | 3 / |
| | | | | | | | | | | | | | | | | | | | 4 / |
| | | | | | | | | | | | | | | | | | | | 5 / |
| | | | | | | | | | | | | | | | | | | | 6 / |
| | | | | | | | | | | | | | | | | | | | 7 / |
| | | | | | | | | | | | | | | | | | | | |